

VILLA PERLE

— OPENING JUNE 2024 —



Total surface area of 430m², comprising 5 bedrooms and 5 bathrooms (accommodating up to 10 people) with views over the private park of the estate, private heated pool, pool house, fitness room, massage room, extensive private garden.

5

Suites

5

Bathrooms

430

m² surface area

8000

m² gardens

VILLA PERLE

— OPENING JUNE 2024 —

LA VILLA

- Heated pool
- Pool house, 40m²
- Massage room
- Fitness room
- King-size bed
- High-speed fibre broadband
- Terraces with view of the park
- Living rooms (120m²), with pool table



View of the park



Heated pool



Pétanque ground



Massage room



Concierge



Fitness room

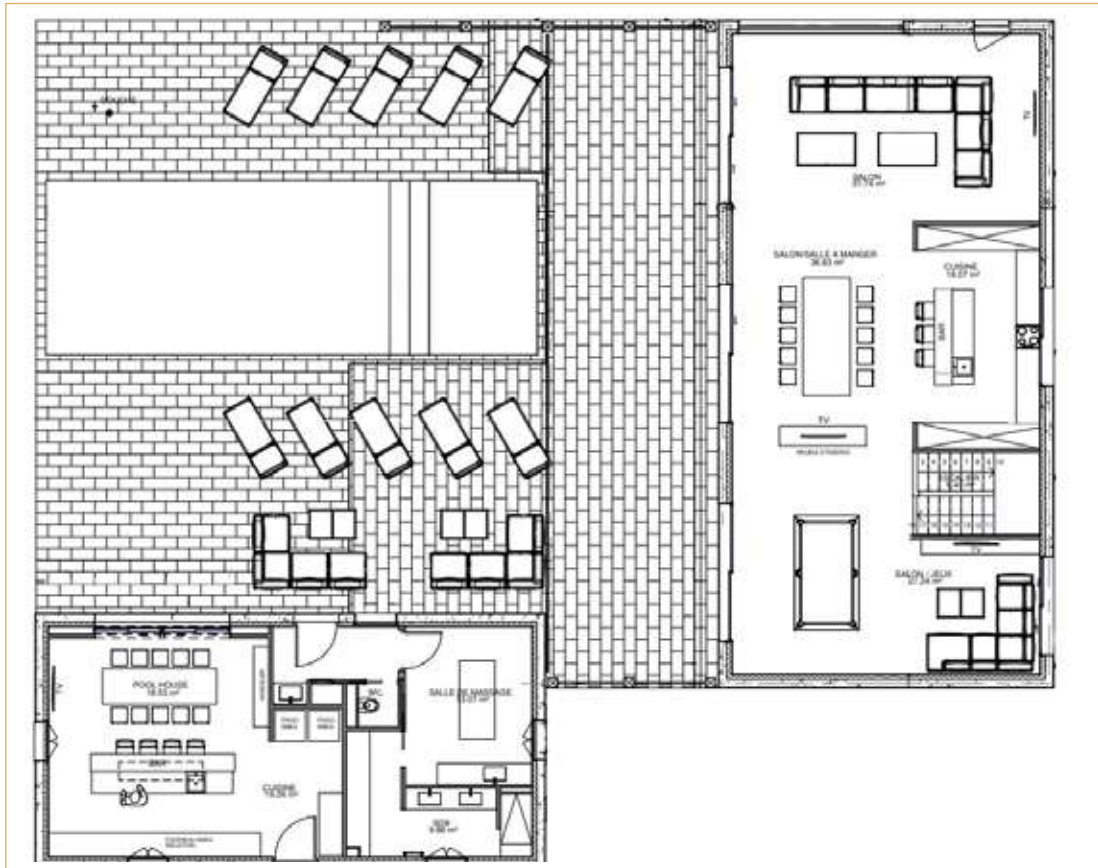


THE DOMAINE LOUISE EXPERIENCE

- Maintenance of parks and gardens
- Concierge service
- 24/24 security system
- Daily housekeeping
- Laundry (additional charge)
- BVLGARI welcome products
- Safe in all bedrooms
- Reversible air-conditioning
- On-site technician
- Outdoor BBQ
- Turndown service (additional charge)
- Fjord53XL boat (additional charge)
- Breakfast (additional charge)

PLANS OF THE VILLA

POOL LEVEL



PLANS OF THE VILLA

GARDEN LEVEL





PLANS OF THE VILLA



GROUND FLOOR



FIRST FLOOR



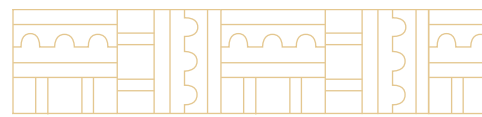
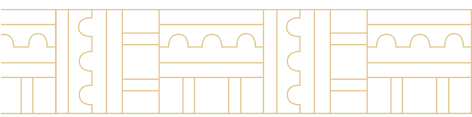


PRESTATIONS

- Heated pool (13 x5)
- Pool house, 40 m², with summer kitchen, barbecue, lounge area.
- Fitness room
- Massage room
- Covered private parking for 2 cars
- Enclosed garden with security, 8000m²
- Pool table
- Laundry room
- Professional kitchen



CONTACT US



DOMAINE LOUISE

📍 1961, Boulevard du littoral, 8342 La Croix Valmer

☎ +33 (0)4 84 88 99 98

✉ contact@domaine-louise.com

