



VILLA PERLE

Opening June 2024



With a total area of 430 m² for 5 bedrooms and 5 bathrooms (occupancy up to 10 guests), overlooking the private park of the Domaine, private heated pool, pool house, gym, massage room, private garden.

5
Suites

5
Bathrooms

430m²
living area

8000m²
of garden



DOMAINE LOUISE

VILLA PERLE

THE VILLA

- Heated pool
- Pool house of 35m²
- Massage room
- Gym
- King size beds
- High speed Internet
- Terrace with parc view
- Living area of 75 m²



Parc view



Heated pool



Boccia



Massage room



Concierge



Gym



DOMAINE LOUISE EXPERIENCE

- Daily Housekeeping
- Concierge Services
- Security system 24/7
- Turndown service (for a fee)
- Laundry service (for a fee)
- BVLGARI welcome amenities
- Air Conditioning
- Pool and garden maintenance
- Technical support
- BBQ by the pool
- Safety box in every room
- Boat Fjord53XL (for a fee)
- Breakfast (for a fee)

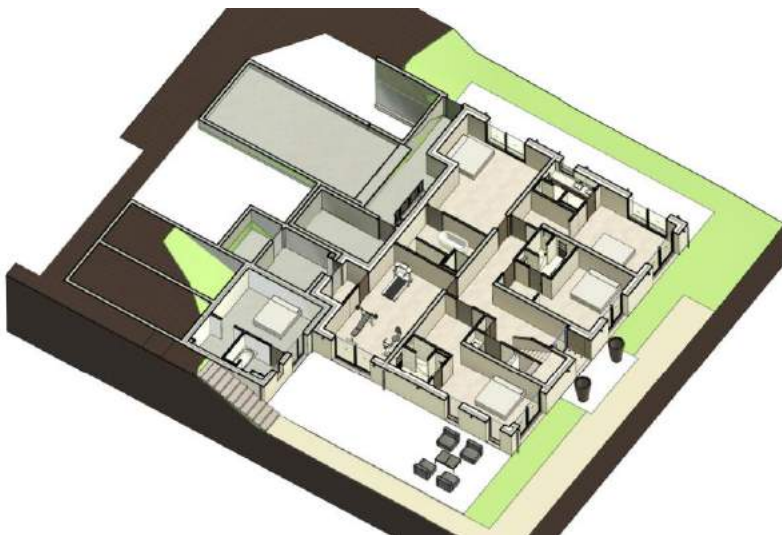
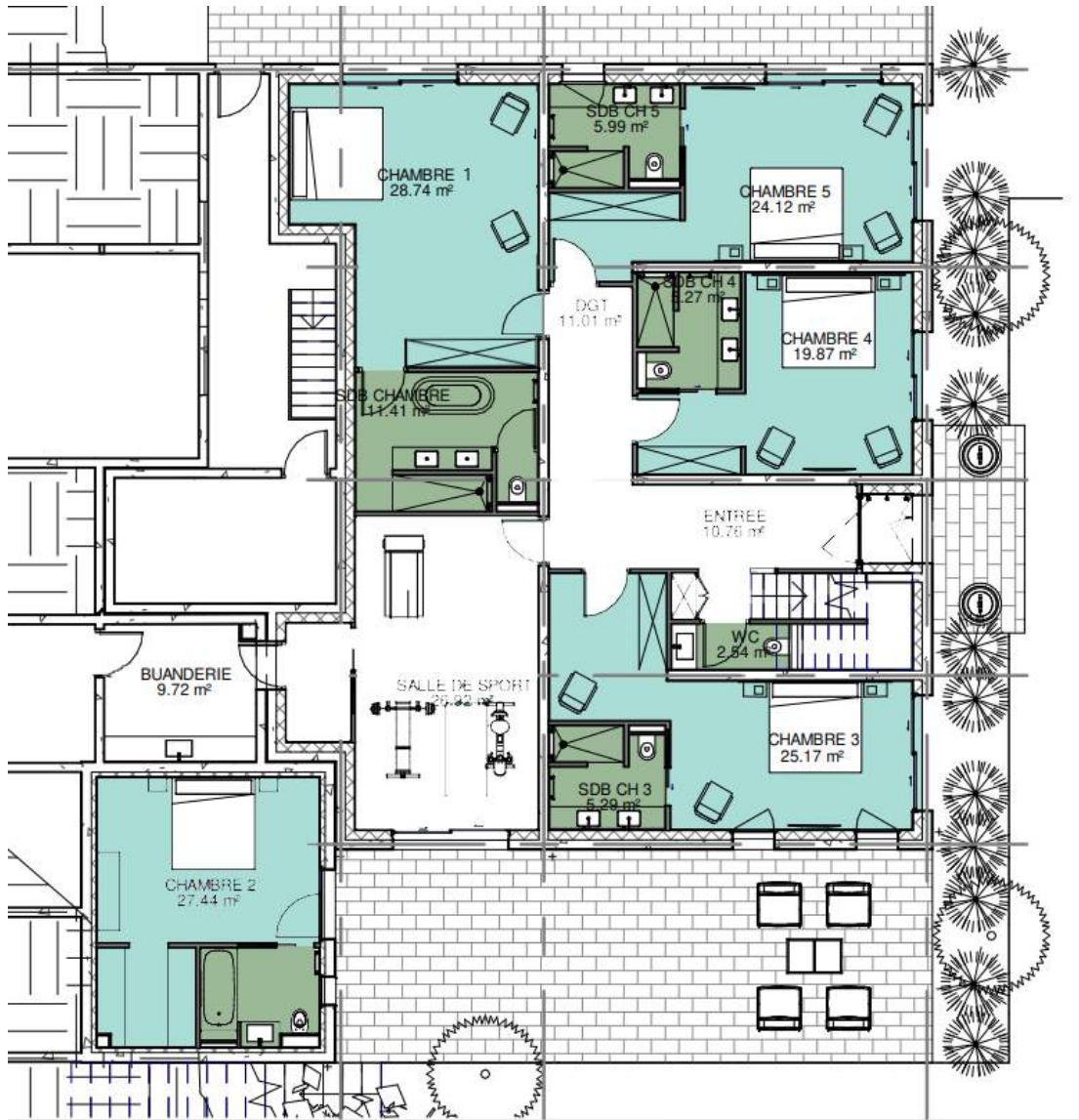
PLANS DE LA VILLA

Main Floor



PLANS DE LA VILLA

Ground floor



VILLA PERLE

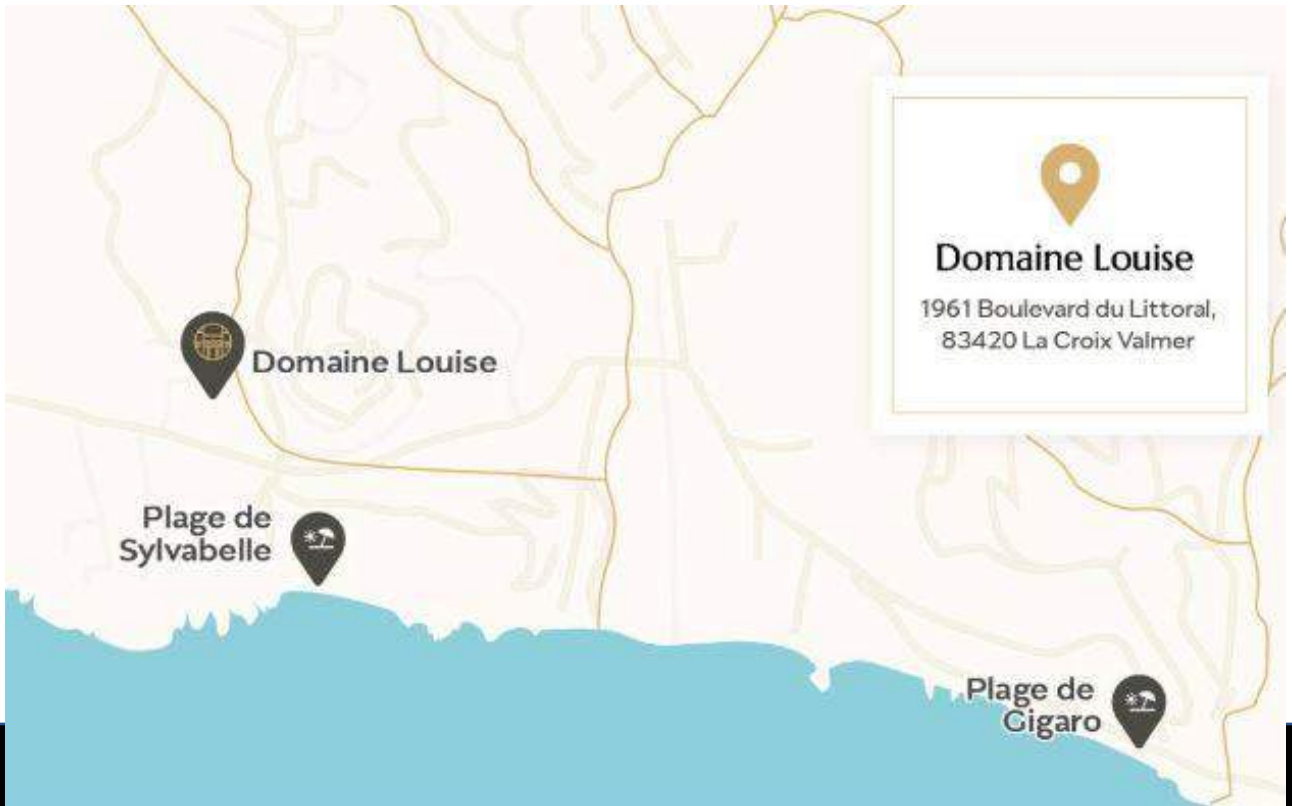



FACILITIES


- Heated swimming pool (13 x5)
- Pool house of 35 m², barbecue, lounge
- Gym
- Massage room
- Covered parking 2 places
- Enclosed and secure garden of 8000 m²
- Private helipad
- Laundry room
- Professional kitchen




CONTACTS



 1961, Boulevard du littoral,
8342 La Croix Valmer

 +33 (0)4 84 88 99 98

 contact@domaine-louise.com



DOMAINE LOUISE